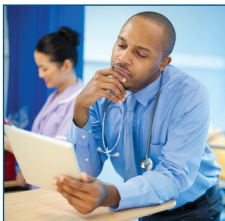


Specialty Certificate Examinations Qualifications to broaden your horizons



MRCPUK

Membership of the Royal Colleges of Physicians of the United Kingdom

Broaden your horizons with **Specialty Certificate Examinations**

Universally recognised credentials are more important than ever in today's global healthcare market. The right qualifications can cross international boundaries and create new opportunities for aspiring specialist physicians.

Launched in 2008, Specialty Certificate Examinations (SCEs) from the Federation of Royal Colleges of Physicians of the United Kingdom are considered the 'gold standard' postgraduate qualification for physicians looking to progress in their specialty. They provide the opportunity to measure your knowledge against an internationally recognised yardstick, which represents the breadth and depth of knowledge required of a newly qualified specialist in your chosen discipline. Having attained this distinguished qualification, you will find it valuable currency when applying for new roles, either at home or abroad.



SCEs - a hallmark of professional achievement

SCEs are intended to drive your career forward by showcasing your knowledge. This highly regarded postgraduate qualification provides potential employers in healthcare centres across the globe with assurance of your specialty knowledge, expertise and commitment to clinical excellence, opening up new opportunities and helping you to accomplish your professional goals and ambitions.

“The challenging experience of preparing for the SCE improved my clinical practice and broadened the scope of my thinking.”

Dr Mohammed Ibraheem Mahmoud Anan, MSc (internal medicine), MRCP(UK)
Specialist of Nephrology, Al Amiri hospital, Kuwait

Providing an international benchmark for postgraduate medical education, each SCE tests both clinical knowledge and understanding of the scientific basis for current medical thinking. SCEs are available in the following specialties:

- Acute medicine
- Dermatology
- Endocrinology and diabetes
- Gastroenterology
- Geriatric medicine
- Infectious diseases
- Medical oncology
- Nephrology
- Neurology
- Palliative medicine
- Respiratory medicine
- Rheumatology

The SCEs are assembled and quality assured by the Federation of Royal Colleges of Physicians of the UK. To be successful, candidates have to clearly demonstrate that they have the knowledge necessary to fulfil a consultant's role and responsibilities in their chosen specialty. The programme for each examination is led by consultant physicians at the forefront of their field, and is continually updated and scrutinised to ensure the accuracy of its content.

Delivering excellence

The Federation of Royal Colleges of Physicians of the UK is a world leader in medical education and assessment, promoting the highest clinical standards. The Federation represents some of Europe's oldest and most prestigious medical education institutions, with an international reputation for exceptional quality in medical education and assessment.

Today's modern and forward-thinking qualifications are the product of over 150 years of experience in training and examining clinical knowledge and skills, drawing on the expertise of leading physicians from around the globe. Each SCE is developed in partnership with the relevant medical specialist society for the UK:

• Acute medicine	Society for Acute Medicine
• Dermatology	British Association of Dermatologists
• Endocrinology and diabetes	Association of British Clinical Diabetologists and Society for Endocrinology
• Gastroenterology	British Society of Gastroenterology
• Geriatric medicine	British Geriatrics Society
• Infectious diseases	British Infection Association
• Medical oncology	Association of Cancer Physicians
• Nephrology	The Renal Association
• Neurology	Association of British Neurologists
• Palliative medicine	Association for Palliative Medicine of Great Britain and Ireland
• Respiratory medicine	British Thoracic Society
• Rheumatology	British Society for Rheumatology

The questions in each paper have been scrutinised and checked for the accuracy of content on repeated occasions, by different groups of specialists. They are prepared in a format that adheres to the highest principles of educational assessment. No other organisation goes to greater lengths to ensure the consistency of its standards.

A global reach

The success of the Federation lies in its outward looking, forward-thinking approach, seeking out and partnering with medical communities across the globe. A world-wide network of centres means that you can now sit your chosen SCE in over 160 countries.

SCEs have already been taken in:



Australia
Barbados
Brunei
Canada
Egypt
France
Ghana

Greece
Hong Kong
India
Iraq
Jamaica
Jordan
Kurdistan

Kuwait
Libya
Malaysia
Malta
Oman
Pakistan
Palestine

Qatar
Republic of Ireland
Saudi Arabia
Singapore
South Africa
Sri Lanka
Sudan

Trinidad
UAE
Uganda
USA
Zimbabwe



About the Specialty Certificate Examination

The SCE is a summative assessment of your scientific and clinical knowledge, as well as your problem-solving ability. It covers all areas of knowledge that you should have acquired during your specialty training. Curricula for the medical specialties are available from the Joint Royal Colleges of Physicians Training Board website (www.jrcptb.org.uk).

“Many of the SCE questions were clinical scenarios similar to those we see in regular nephrology practice. Passing the examination at the first attempt has boosted my confidence as a nephrologist. I consider it to be an important achievement.”

Dr Dhanya Mohan, MD, DNB, MRCP(UK), Senior Specialist Registrar, Nephrology Unit, Dubai Hospital, Dubai Health Authority, Dubai, United Arab Emirates

Passing the SCE provides objective evidence that you have the necessary knowledge and understanding of evidence-based practice to take on the responsibilities of a consultant in your chosen specialty. The SCE is intended to help demonstrate your suitability for this role. The reading and learning required when preparing to sit it also requires candidates to revise and update their knowledge of topics and conditions that may not be part of their everyday practice.



The SCE can form an important part of your portfolio when applying for specialist positions for the first time. If you are an established specialist, it provides you with an opportunity to demonstrate that your knowledge remains relevant and up to date. The learning process and examination not only offer an intellectual challenge and an opportunity to demonstrate your knowledge, but will also boost your confidence when teaching others.

“This exam enables you to improve your factual knowledge and decision-making skills; it’s part of lifelong learning for a physician.”

Dr Mohamed A Ghoraba, MBChB, MSc, MD, MRCP(UK) Fellow of Neurology,
Department of Neurology, Mataria Teaching Hospital, Cairo, Egypt

Examination format

The SCE is a computer-based, multiple choice test divided into two papers. Candidates are allowed three hours to answer each paper, which comprises 100 items. Each question presents a clinical scenario, with the results of some investigations and perhaps an image or scan, and tests your medical knowledge and your competency in diagnosis, investigation, management and prognosis. You are asked to choose the best answer from five options.

The test is taken at an independently operated assessment centre. These centres run in most countries – contact us on sce.international@mrcpuk.org to find your nearest centre.

Who should apply?

Applicants are advised to attempt the SCE for the first time towards the end of their specialist medical training, by which time they are likely to have acquired the breadth of experience necessary for familiarity with the clinical scenarios used in the questions. However, there are no restrictions on when you may make your first attempt, and it is no longer necessary for applicants for the SCE in any specialty to have passed the MRCP(UK) examination.

How to apply

You can apply online via our website: www.mrcpuk.org/SCE.

sce.international@mrcpuk.org
www.mrcpuk.org/SCE

MRCPUK

Membership of the Royal Colleges of Physicians of the United Kingdom