

## Specialty Certificate in Dermatology Sample Questions

### Question: 1

A 40-year-old man presented with a 12-month history of an eruption affecting both hands. It improved when he went on holiday, but did not go away. He had worked as a bricklayer for 20 years.

On examination, he had a chronic dermatitis affecting the back and front of both hands. He was referred for patch testing.

Which relevant allergen is most likely to prove positive on patch testing?

- A cobalt chloride
- B fragrance mix II
- C nickel sulphate
- D potassium dichromate
- E thiuram mix

**Question: 2**

A 50-year-old woman presented with a solitary asymptomatic lesion on her left thigh. On examination, the lesion was pink, dome-shaped and measured 1 × 1 cm. The lesion demonstrated a fine collarette of scale. The lesion was excised and sent for histopathological analysis. The pathologist reported that there were some psoriasiform features in the epidermis.

What is the most likely diagnosis?

- A clear-cell acanthoma
- B keratoacanthoma
- C pilomatricoma
- D seborrhoeic keratosis
- E trichilemmoma

### Question: 3

A 53-year-old woman was referred with a lesion on her lower leg. She had noted the rapid development of a very painful ulcer during the previous 3 weeks. Before the ulceration appeared, she recalled a small blister following minor trauma.

On examination, there was a discrete deep ulcer with undermined borders on the lateral aspect of the mid-left calf that measured 8 × 10 cm. There was surrounding erythema and regional lymphadenopathy. She had no signs of arterial or venous insufficiency. A skin biopsy taken from the ulcer margin demonstrated a dense diffuse neutrophilic infiltrate with a mixture of lymphocytes, plasma cells, histiocytes and occasional foreign body giant cells, extending to the subcutis.

#### Investigations:

haemoglobin	146 g/L (115–165)
white cell count	$14.2 \times 10^9/L$ (4.0–11.0)
platelet count	$450 \times 10^9/L$ (150–400)
anti-neutrophil cytoplasmic antibodies	negative
antinuclear antibodies	negative
syphilis serology	negative
urinalysis	normal
colonoscopy	normal
culture for bacteria, mycobacteria	negative and fungi

What is the most appropriate therapeutic option?

- A dapsons
- B flucloxacillin
- C infliximab
- D minocycline
- E prednisolone

**Question: 4**

A 53-year-old man presented with a 3-month history of sore areas in the mouth and on the scalp. He was otherwise well and taking no regular medication. On examination, there were erosions on the buccal mucosae and crusted lesions on his scalp and upper back.

Skin biopsy demonstrated epidermal acantholysis and a mixed inflammatory cell infiltrate in the dermis. Direct immunofluorescence showed intercellular deposition of immunoglobulin G and C3 in the epidermis.

What is the most likely autoantigen?

- A collagen VII
- B desmocollin 1
- C desmoglein 3
- D desmoplakin
- E laminin V

**Question: 5**

A 17-year-old girl presented with acne. She had been taking co-cyprindiol (cyproterone acetate 2 mg, ethinylestradiol 35 micrograms) for contraception and acne management for the last 2 years.

On examination, she had facial papules, cysts, comedones and scarring. Her fasting lipids and liver function tests were within the normal range.

What is the most important issue to discuss if considering treatment with systemic isotretinoin?

- A alcohol consumption
- B cheilitis
- C drug interaction
- D keloid risk
- E teratogenic risk

**Question: 6**

A 23-year-old man was referred for genetic counselling because of non-itchy dryness of his skin, present since birth. He was otherwise well. His maternal grandfather had a similar skin condition. His wife was pregnant with their first child.

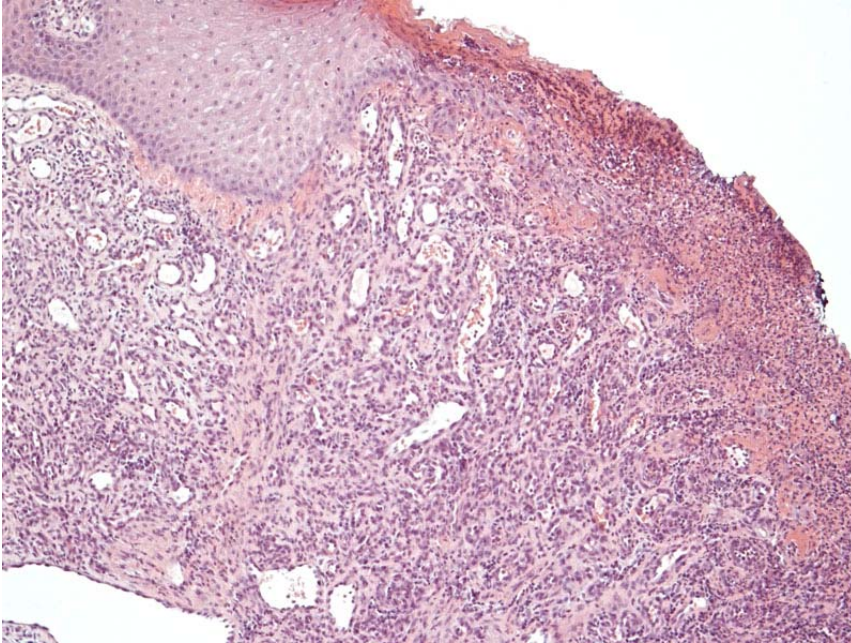
On examination, he had pronounced light-brown scaling of his skin, most prominent on the extensor surfaces of the upper arms and legs with less marked changes in the flexures.

What is the probability that the child will express ichthyosis?

- A 0%
- B 25%
- C 50%
- D 75%
- E 100%

**Question: 7**

A 27-year-old man presented with a 2-month history of an enlarging, red nodule on the left great toe. The lesion was uncomfortable when he walked. On examination, there was an inflamed nodule 8 mm in diameter. The lesion was excised and the histology was examined (see image).



What is the most likely diagnosis?

- A abscess
- B amelanotic melanoma
- C eccrine poroma
- D myxoid cyst
- E pyogenic granuloma

**Question: 8**

A 55-year-old woman presented with a 3-month history of an eruption on her hands and feet. She worked as a cleaner and had a past history of hypothyroidism and reflux oesophagitis, which had been treated with thyroxine and omeprazole. She consumed 12 units of alcohol per week and smoked 20 cigarettes per day.

On examination, there were pustules and brown scaly lesions over the palms and the insteps.

What is the most likely diagnosis?

- A allergic contact dermatitis
- B asteatotic eczema
- C drug-induced lichen planus
- D irritant contact dermatitis
- E palmo-plantar pustulosis

**Question: 9**

A 75-year-old woman presented with an enlarging lesion on the upper back of 3 years' duration. She had multiple co-morbidities. On examination, there was a 4-cm diameter erythematous, shiny plaque. A punch biopsy showed superficial basal cell carcinoma. It was decided to treat her with imiquimod.

What is the recommended treatment regimen?

- A 3 times per week for 8 weeks
- B 5 times per week for 6 weeks
- C alternate days for 4 weeks
- D daily for 3 weeks
- E daily for 6 weeks

**Question: 10**

A 62-year-old man presented with a rapidly enlarging nodule on his scalp. He had undergone a renal transplant 15 years previously. He was taking prednisolone, azathioprine and ciclosporin.

On examination, there was a purple lesion measuring 2 cm in diameter that was tender, but not ulcerated. There was no lymphadenopathy.

Skin biopsy showed features of Merkel cell carcinoma.

What virus is most likely to be associated with this tumour?

- A herpesvirus
- B papillomavirus
- C polyomavirus
- D poxvirus
- E retrovirus

## **Answers**

1. Answer: D

2. Answer: A

3. Answer: E

4. Answer: C

5. Answer: E

6. Answer: A

7. Answer: E

8. Answer: E

9. Answer: B

10. Answer: C